



**Avondale GATE**  
MAGNET SCHOOL



**Avondale High School**  
Accelerated Pathways



**Welcome to  
Information Night**

**2024-2025**

**Anita J. Steward  
GATE Principal**

**Doug Wilson  
AHS Principal**



Welcome

Coleen Brunni, Assistant Superintendent



## 2nd-12th Grade Experience



**Avondale GATE**  
MAGNET SCHOOL

**2nd-8th**



**Avondale High School**  
Accelerated Pathways

**9th-12th**



# Today's Presentation

- ▶ **What makes Avondale unique**
- ▶ **Basics of GATE & Accelerated Pathways**
  - ▶ **Social emotional learning**
  - ▶ **Elementary vs Middle School**
    - ▶ **Accelerated Pathways**
      - ▶ **Perspectives**
    - ▶ **MSU GATE partnership**
- ▶ **Application process & admissions**



## About US



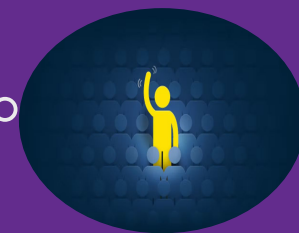
- Education
  - B.A. Elementary Education (K-8th)
  - M.Ed. in the Art of Teaching
  - Elementary & Secondary Administrator Certificate (K-12)
- 26 years in education
  - Teacher
    - gifted and general education
  - Academic Coach
  - Assistant Principal
  - Principal
  - Assistant Superintendent of Curriculum and Instruction
  - Superintendent

- Education
  - B.S. Biology
  - M.Ed. in General Education
  - Elementary & Secondary Administrator Certificate (K-12)
- 27 years in education
  - Teacher at Magnet School
  - Assistant Principal
  - Current Avondale High School Principal



# What Makes Avondale Unique?

- ▶ Non-traditional Experiences
- ▶ Personalized Pathways
  - ▶ Paced according to student need
- ▶ Students engaged in deeper learning
- ▶ Small group instruction
- ▶ Project-Based Learning
- ▶ Inquiry-based Learning
- ▶ Experiential Learning relevant to student interests
- ▶ Address Needs of Whole Child
- ▶ Consistent parent/teacher/student communication





# A Glimpse Inside...



# GATE's History



## Past

- ▶ Group of parents approached Avondale Administration and advocated for gifted education.
- ▶ Researched & began!
- ▶ Started at Woodland Elementary in 2017
- ▶ Two 3rd/4th grade classrooms
- ▶ 31 students

## Current

- ▶ GATE
  - ▶ 2nd-8th grade
    - ▶ Elementary is 2nd-5th
    - ▶ Middle is 6th-8th
    - ▶ 380 students and growing
- ▶ AHS
  - ▶ Accelerated Pathways Program
    - ▶ 3rd cohort of students





## Benefits of GATE

- ▶ Our students are **engaged** in school, and committed to their learning!
  - ▶ Access to **like-minded peers**
  - ▶ Content that is **intellectually appropriate**
  - ▶ **Collaborative** and **productive**
- ▶ **Staff**
  - ▶ Continued professional development surrounding gifted education



## What does it mean to be “gifted”?

- ▶ According to National Association of Gifted Children (NAGC), “Students with gifts and talents perform—or have the capability to perform—at higher levels compared to others of the same age, experience, and environment in one or more domains”.
- ▶ They require programs and/or services that are differentiated beyond those normally provided by a regular school program in order to maximize their learning potential.

They require programs and/or services that are differentiated beyond those normally provided by the regular school program in order to realize their contribution to self and society.

“That sentence for me is the heart of what our school is. It’s why we’re here.

We are not here to provide a “normal” curriculum because we are not designed to be a normal school.

This is what makes our school so special. It’s why we have such a high interest in our school from outside families, and it’s why we continue to grow.”

(Megan Zimmerman, 4th grade teacher)



# Portrait of a Gifted Learner

## COMPLEX REASONING

Critical Thinking  
Problem Solving  
Systems Thinking



## GLOBAL MINDEDNESS

Awareness & Appreciation  
Justice & Service-Oriented  
Life-Long Learner



## CREATIVE THINKING

Open-Mindedness  
Risk Taking  
Innovation Skills  
Divergent Thinking



## COMMUNICATING EFFECTIVELY

Self-Expression  
Active Listening  
Shared Understanding  
Self-Advocacy



## AFFECTIVE PROCESSING

Interpersonal Interactions  
Intrapersonal Development  
Leadership Skills



## EXECUTIVE FUNCTIONING

Project Management  
Self-Regulation  
Adaptability  
Conflict Resolution





# High Achiever vs. Gifted Learner

## **High Achiever** vs **Gifted Learner**

vs

Knows the answers	Asks the questions
Is interested	Is highly curious
Is attentive	Is intellectually engaged
Has good ideas	Has original ideas
Works hard	Performs with ease
Commits time and effort to learning	May need less time to excel
Answers questions	Responds with detail and unique perspectives
Absorbs information	Manipulates information
Copies and responds accurately	Creates new and original products
Is a top student	Is beyond his or her age peers



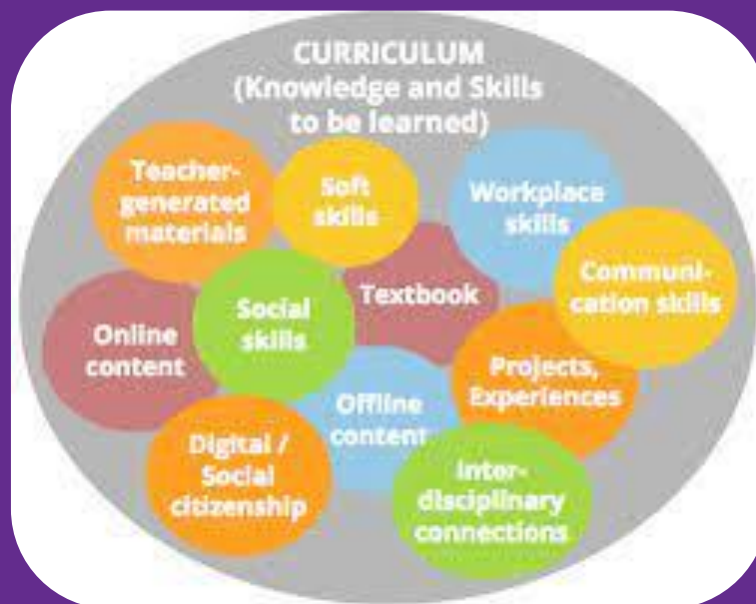


# Social & Emotional Learning

- ▶ Positivity Project (P2)
  - ▶ 2nd-8th
    - ▶ Focus on character strengths
    - ▶ Build on empathy which positively impacts others
      - ▶ e.g. teamwork, integrity, perseverance, curiosity...

# Curriculum & Instruction

- ▶ Placement/Test-Out Assessments
- ▶ Acceleration balanced with depth & complexity
- ▶ Pre-assessments to determine level and/or readiness





# Elementary (2nd-5th)

- ▶ Structure of Day
  - ▶ ELA, Math, Science or Social Studies & Special
  - ▶ Enrichment





# Middle School (6th-8th)

- ▶ Structure of Day
  - ▶ 6 period day + advisory
- ▶ Middle School Opportunities
  - ▶ Classes at AHS
  - ▶ 21F

# Athletics

- ▶ All 6th–8th grade students are welcome to participate in Avondale Middle sports.





## Beyond GATE

- ▶ What happens after 8th grade?
  - ▶ SOC or In-District
    - ▶ Avondale Accelerated Pathways





# Beyond GATE into High School

- ▶ Avondale High School
  - ▶ Avondale Accelerated Pathways
    - ▶ Supports students who need & desire academic acceleration at high school
    - ▶ Accelerated Dual Enrollment, Accelerated Early College, Early Graduation
    - ▶ Academic & Post Secondary Planning Support





# Who Should Consider the Accelerated Pathways?

- Incoming 9th grade students who have a **need** and **desire** for **acceleration** in their high school curriculum
- Students who are taking high school coursework in middle school
- Students who plan to Test Out or Credit Forward to accelerate their learning for advancement of curriculum
- Students who are aimed to fast-track towards postsecondary education
- **Students who are focused on specific accelerated outcomes: accelerated Dual Enrollment, accelerated Early Middle College, and early graduation**





# Accelerated Pathways Benefits

## Accelerated Pathways:

- ▶ Provides students with guidance through Accelerated Pathway coordinator support in course planning to facilitate academic acceleration and post secondary planning.



Looking for more information? Click [here](#)

Contact: Jennifer Wilson

(248) 537-6124

Jennifer.wilson@avondaleschools.org





# A Student's Perspective

## A Gate & Accelerated Pathways Student Perspective

- Who am I?
- What opportunities at GATE provided acceleration into high school coursework early?
- What opportunities at AHS provide acceleration.
- How has this been helpful for my learning and my future?



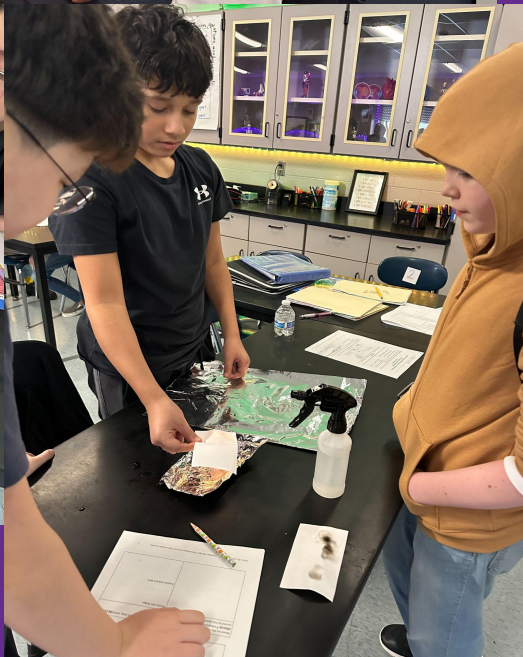
# Extension Opportunities



- ▶ MSU GATE Program
  - ▶ Susan Sheth
  - ▶ Contact: [gifted@msu.edu](mailto:gifted@msu.edu)
  - ▶ Website: [gifted.msu.edu](http://gifted.msu.edu)
  - ▶ Academic Year Programs for students in 5th–8th grade:
    - ▶ ISHALL
      - ▶ Intensive Studies in Humanities, Arts, Language and Literature
    - ▶ CHAMP
      - ▶ Cooperative Highly Accelerated Mathematics Program
    - ▶ Both are double accelerated so students complete 4 required high school courses in 2 years







## Portrait of an Avondale Graduate

Conscientious Citizen  
Innovative Thinker  
Effective Communicator  
Creative Problem Solver  
Self-actualized Risk Taker



## GATE by the Numbers...

- ▶ 2024-2025 incoming students:
  - ▶ 79%SOC, 21% District Residents
- ▶ 2023-2024 School Year M-Step:
  - ▶ 100% proficient or above on Math and ELA.
  - ▶ Performing significantly above peer schools.



# GATE Magnet School Ranks in Top Schools in Michigan

## Avondale Gifted and Talented Education

**#4** in Michigan Elementary Schools

**#2** in Michigan Middle Schools





# Miscellaneous

## ▶ Busy Bees

- ▶ Before and after school care
- ▶ Daily fee for AM and PM

## ▶ Clubs

- ▶ Clubs vary by year and availability
- ▶ e.g. Chess, Robotics, Karate, Spanish, Art, Drama...



# Miscellaneous



- ▶ **Transportation**
  - ▶ In-District resident students may ride the middle school buses
  - ▶ Transportation is not provided for schools of choice students
    - ▶ Many car pools arranged
- ▶ **Support Services**
  - ▶ ESL
  - ▶ Learning Support Services
    - ▶ Speech/Language & Social work



# Application

- ▶ **Online application**
  - ▶ Complete between **Jan. 6 - Feb. 4, 2025\*\***
    - ▶ Basic information
    - ▶ Parent Questionnaire
    - ▶ Sign up for testing: NWEA MAP Reading and Math, and CogAT
      - ▶ Computerized
      - ▶ **All** 1st graders



# Application

- ▶ **Online application**
- ▶ Submit most recent Report Card
- ▶ Submit Behavior Report (2 yrs)
  - ▶ Must obtain from your child's school
    - ▶ Student Information System (SIS)
    - ▶ Letter on School's Letterhead
- ▶ Any OPTIONAL items you may wish to include

Applications or application information **will not be accepted**  
**after Feb. 4, 2025\*\***



# Application Process

- ▶ Make sure you have **ALL** your documents before you hit submit. Emailed documents will **not** be accepted.
- ▶ Check **ALL** calendars to make sure the testing date you select is best fit for your child and your family. If a date change is needed you will need to re-submit your application.

Avondale Schools reserves the right to deny access to a student who receives special services and resides outside of the Oakland Intermediate School District if mutual agreement cannot be reached with the student's home district/ISD related to responsibility for added costs.





# Application Process

- ▶ In-District Residents and Schools of Choice Applicants
  - ▶ Complete application by deadline!
    - ▶ **Feb. 4, 2025\*\***
  - ▶ Schools of choice applicants can apply if you live in Oakland or any contiguous county.
    - ▶ Avondale Schools reserves the right to deny access to a student who receives special services and resides outside of the Oakland Intermediate School District if mutual agreement cannot be reached with the student's home district/ISD related to responsibility for added costs.



# Schools of Choice

Avondale School District and GATE are governed by the Schools of Choice provisions in Section 105/105c of the State School Aid Act.

- ▶ If the number of applicants exceeds the number of positions available, the district must accept eligible applicants in the following order:
  - ▶ Students who reside in the same household as students enrolled under section 105 or 105c in the immediately preceding school year, semester, or trimester.
  - ▶ Other students selected according to a random draw system, which must also be used to establish a waiting list.



# Schools of Choice

Avondale School District and GATE are governed by the Schools of Choice provisions in Section 105/105c of the State School Aid Act.

- ▶ Once accepted through SOC
  - ▶ 12th grade



# Admissions

- ▶ Admissions is determined by a team of administrators and teachers
  - ▶ **Rubric**
    - ▶ **1st Round:** NWEA or I-Ready (Math & Reading), report card, & behavior report
      - ▶ Application Team Review
    - ▶ **2nd Round:** CoGat
      - ▶ Application Team Review
    - ▶ **Lottery**, if needed



# Admissions Process

- ▶ **Rubric-based system**
- ▶ **Parent Notification of Acceptance**
  - ▶ **Feb. 28, 2025**
- ▶ **Letter of Intent**
  - ▶ **March 21, 2025**
- ▶ **Enrollment**
  - ▶ **May 1, 2025**



# An Uncommon Experience

- ▶ **Avondale GATE and AHS are truly uncommon educational experiences for your child.**
- ▶ **Gifted students have a right to a free, appropriate and rigorous education that stretches their skills and thinking every day.**

**Please consider applying!**



# Thank You!

## Any questions?



Mrs. Anita Steward, Principal



Mr. Doug Wilson, Principal

**APPLICATION WINDOW OPENING SOON!**

[AvondaleGATE.org](http://AvondaleGATE.org)